



PRECISION CONSULTING ENGINEERING  
الدقة للإستشارات الهندسية

CREATING YOUR DREAM PRECISELY

CONTACT : +20 233382124 +20 1021096980

[WWW.PCE-CONSULTANTS.COM](http://WWW.PCE-CONSULTANTS.COM)

3 MORKS HANA ST. OFF NAWAL ST., DOKKI, GIZA, EGYPT.

COMPANY PROFILE



# TABLE OF CONTENT

- ▶ ABOUT US
- ▶ ORGANIZATION CHART
- ▶ SERVICES
- ▶ OUR EXPERTISE
- ▶ PROJECTS
- ▶ OUR CLIENTS

# ABOUT US

## WHO WE ARE

---

PCE PRECISION CONSULTING ENGINEERING is Professional company for consultancy services founded in 2008 in Egypt offering a wide range of technical services led by a group of highly qualified consultants and technical engineers, whose expertise in engineering. Projects covering all major disciplines of design and construction supervision. PCE has successfully accomplished a long list of projects, in Egypt, Africa and the Middle East covering all major fields of engineering . This covers architecture / landscape, civil engineering, electromechanical engineering, infrastructure engineering, tunneling, transportation facilities and utilities.

Profiles of selected PCE indicative projects , completed or currently under design and construction is included hereinafter. The services rendered by the firm cover almost the full range of professional engineering services. These include project identification, pre-feasibility and feasibility studies, properties and sites appraisal, selection of new sites for projects, design and detailed engineering of projects, construction management and procurement services, construction supervision and inspection services, quality control.

## VISION

---

Precision Consulting Engineering aspires to be one of the top five multi-disciplinary engineering consultancy firms in the Middle East with satisfied Clients and projects portfolio from the entire region.

## MISSION

---

Precision Consulting Engineering is committed to offer state-of-the-art services to all assignments throughout the whole project life-cycle. We are dedicated to deliver Client's needs and exceed expectations by promising timely deadlines, while observing budgets and assuring quality.

## PURPOSE

---

Our purpose to create, enhance and sustain the world's built natural and social environments.

## CORE VALUES

---

Our core values recognize that our business success is founded upon our commitment to certain principles.

### INTEGRITY

We succeed by doing things the right way, with respect to ethics, laws, quality standards and each other.

### CLIENTS

We succeed by making our clients successful. We embrace our client's challenges and opportunities and work for their success

### EXPERIENCE

We earn and advance our reputation by delivering superior value on every project that we undertake.

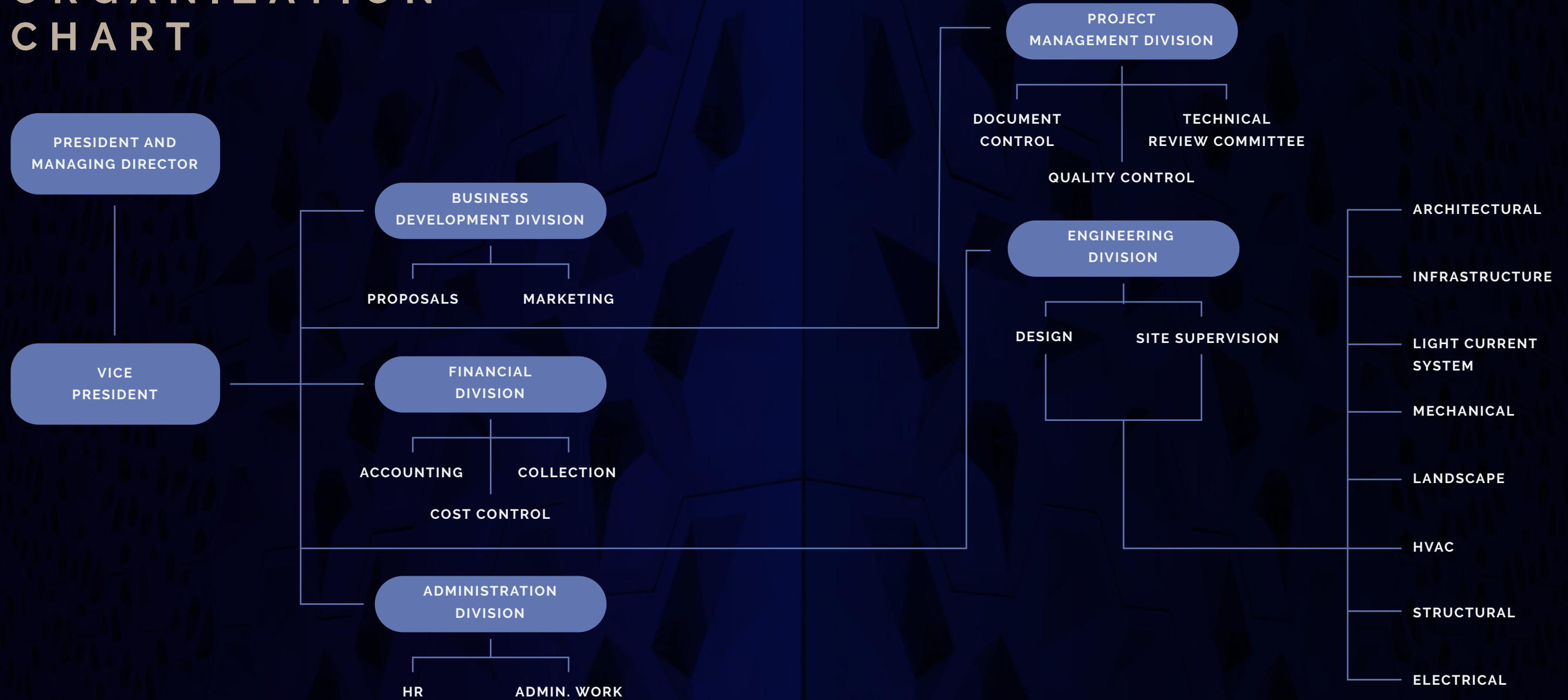
### SAFETY

Whether in an office or on a construction site, keeping our people safe is our most important measure of success.

### GROWTH

We recognize that our financial growth is the fairly earned result of living up to these principles.

# ORGANIZATION CHART



# SERVICES

## ENGINEERING STUDIES

- Prefeasibility and feasibility studies.
- Site and asset appraisals.
- Geotechnical studies.
- Energy saving studies.
- Environmental impact assessments.
- Social impact assessments.



# SERVICES

## ENGINEERING DESIGN

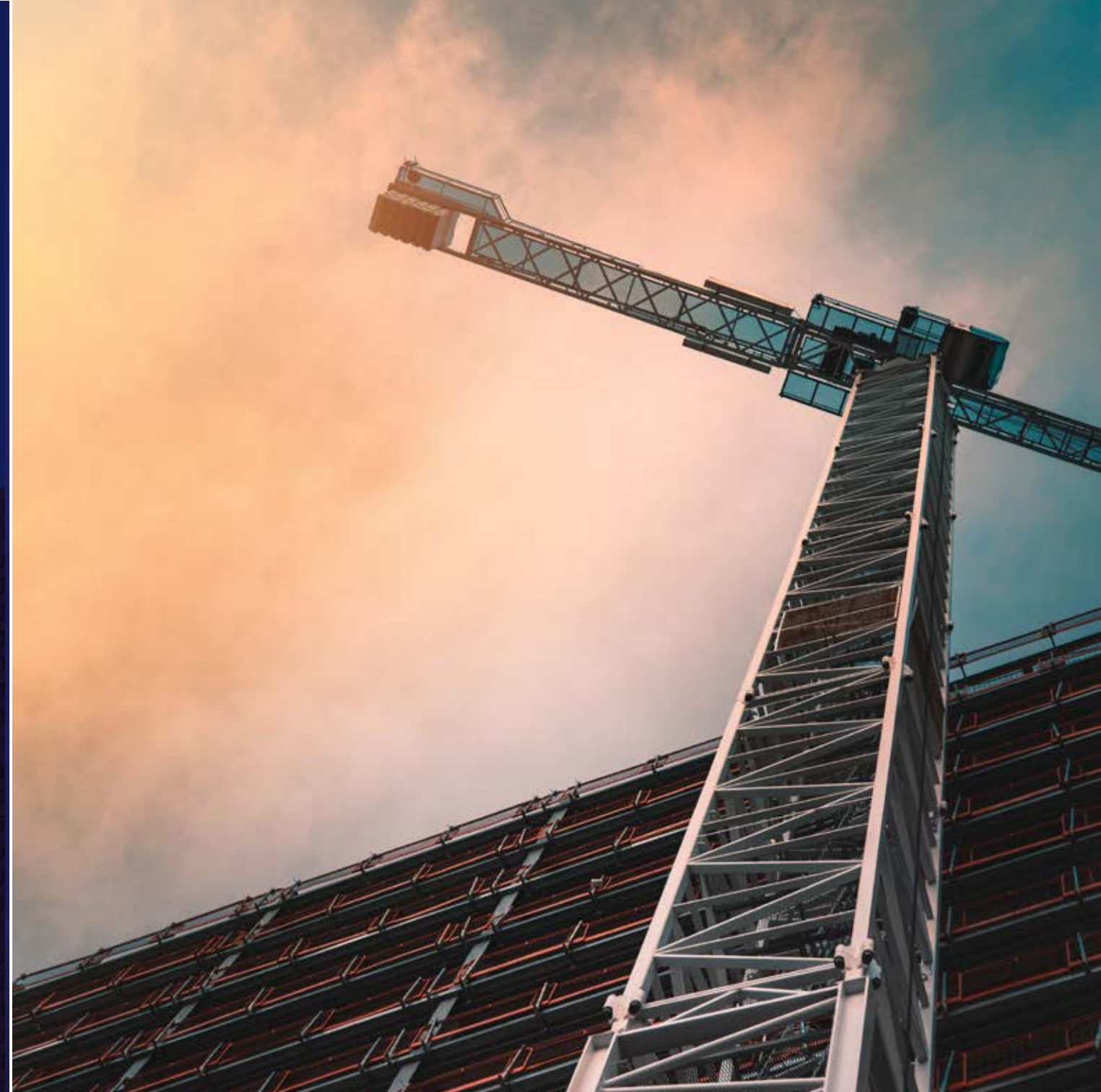
- Front end engineering (FEED).
- Concept, preliminary and Schematic design.
- Construction documents.
- Specifications.
- Bill of materials.
- System design engineering.
- Computer simulations.



# SERVICES

## CONSTRUCTION PROJECT MANAGEMENT

- CM professional practice includes specific activities.
- Management structure of the project management team.
- Organizing and leading by implementing project controls.

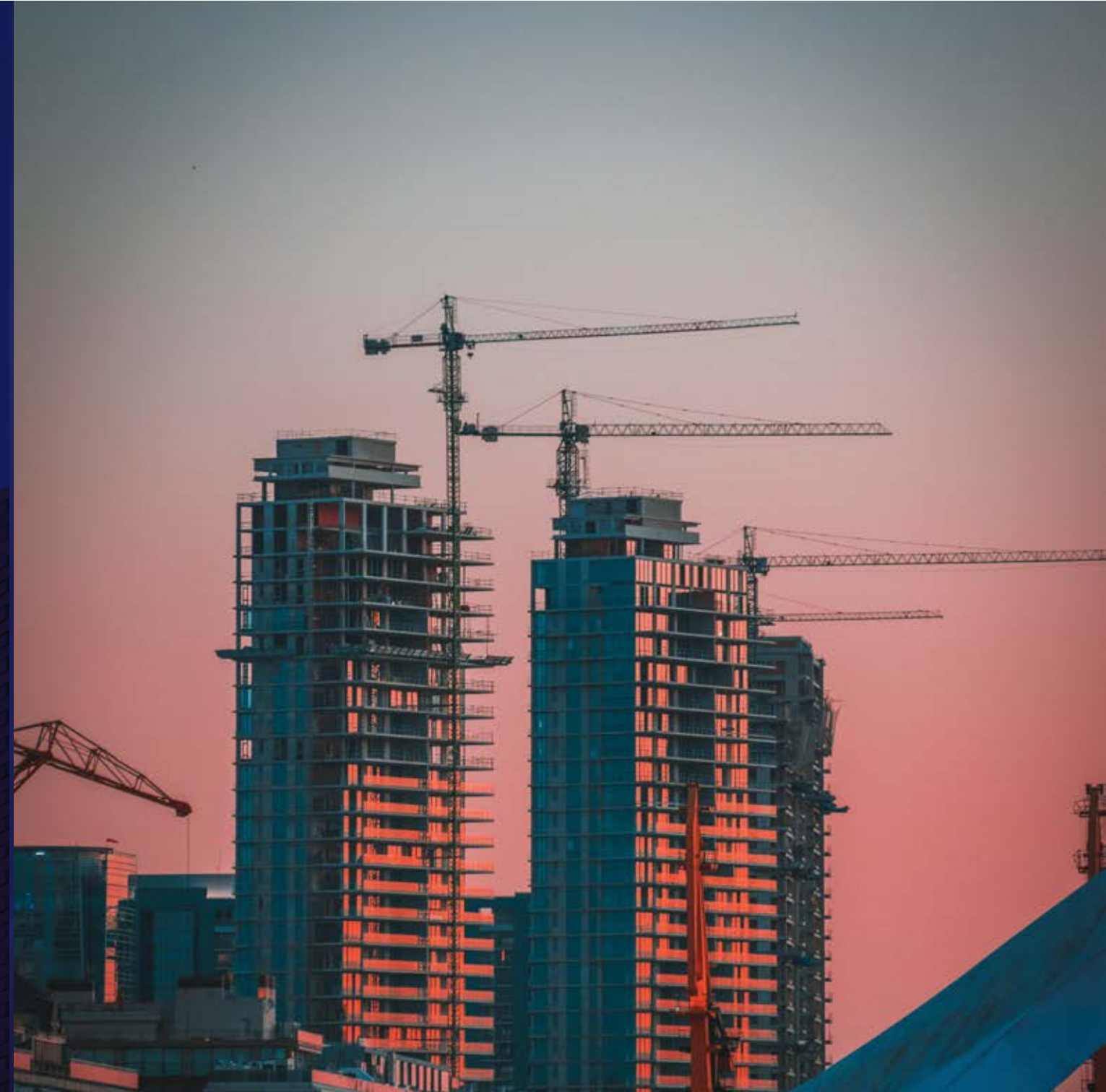


# SERVICES

## SITE SUPERVISION

---

- Project daily inspection and supervision.
- Design review.
- Shop drawing review.
- Material submittal approval.
- Project specification conformity.
- Safety compliance.





PCE UNITES PROFESSIONALS  
WORKING COLLABORATIVELY  
ACROSS A BORAD RANGE OF  
DISCIPLINES



# PROJECTS

- ▶ INDUSTRIAL
- ▶ RESIDENTIAL
- ▶ ADMINISTRATION
- ▶ COMMERCIAL
- ▶ INFRASTRUCTURE
- ▶ HEALTH CARE
- ▶ TOURISTIC
- ▶ RETAIL
- ▶ EDUCATION
- ▶ ENTERTAINMENT
- ▶ SPORTS

# INDUSTRIAL

## ▶ AL-WATANIA FACTORIES

### ▶ BRIEF

PCE is the consultant for Al-Watania poultry, Egypt since 2015 for the design and site supervision in some of their new projects.

### ▶ SCOPE OF WORK

Complete design package and site supervision.

▶ <b>BUA</b>	<b>Client</b>	<b>Location</b>
100,000 m <sup>2</sup>	Al-Watania Poultry	Wadi Elnatron, Egypt



# INDUSTRIAL

## ▶ MARCYRL PHARMA FACTORY

### ▶ BRIEF

Marcyrl pharma is one of the leading pharmaceutical factories in Egypt, and the project consists of production area, storages, laboratories, and administration area .

### ▶ SCOPE OF WORK

Complete design package and site supervision.

▶	<b>BUA</b>	<b>Client</b>	<b>Location</b>
	20,760 m <sup>2</sup>	Marcyrl Pharmaceutical	El-Obour City Egypt



# INDUSTRIAL

## ▶ RIVA PHARMA FACTORY

### ▶ BRIEF

Riva pharma is one of the leading pharmaceutical factories in Egypt, and the project consists of production area, storages, laboratories, and admin. area.

### ▶ SCOPE OF WORK

Complete design package.

▶ <b>BUA</b>	<b>Client</b>	<b>Location</b>
1270 m <sup>2</sup>	Riva Pharma	Nasr City, Egypt



## ▶ DABUR FACTORY

### ▶ BRIEF

Dabur Amla is one of the leading cosmetics factories in Egypt, and the project consists of new storage area, and administration area.

### ▶ SCOPE OF WORK

Complete architecture and electro mechanical design package, and site supervision.

▶ <b>BUA</b>	<b>Client</b>	<b>Location</b>
12,720 m <sup>2</sup>	Dabur Egypt Ltd	10th of Ramadan City Egypt



# INDUSTRIAL

## ▶ CSC STORES

### ▶ BRIEF

CSC stores is one of the leading storage areas in Egypt, and the project consists of new refrigerator stores (20,000 m<sup>2</sup>), and fire alarm for the complete storage areas .

### ▶ SCOPE OF WORK

Complete electromechanical design package, site supervision, and shop drawings.

▶ BUA	Client	Location
300,000 m <sup>2</sup>	Custom Storge Company	6 of October City Egypt



## ▶ AL-ANDALOUS PHARMA FACTORY & (R&D LABS) BRIEF

Andalus pharma project consists of the evaluation of the structure of the old and new production buildings, and new extension of the R&D labs, and complete infrastructure work and the pump room.

### ▶ SCOPE OF WORK

Complete structure & electromechanical design package, and site supervision.

▶ BUA	Client	Location
3066 m <sup>2</sup>	Al-Andalous Factory	6 of October City Egypt



Al Andalous

# INDUSTRIAL

## ▶ L'OREAL COSMETICS FACTORY

### ▶ SCOPE OF WORK

Complete electromechanical & infrastructure design package, and shop drawing.

▶ <b>BUA</b>	<b>Client</b>	<b>Location</b>
2000 m <sup>2</sup>	Hassan Allam Contracting	10 <sup>th</sup> of Ramadan City Egypt

L'ORÉAL



## ▶ DELTA PHARMA FACTORY

### ▶ SCOPE OF WORK

Complete electromechanical and infrastructure design package for the new production building.

▶ <b>BUA</b>	<b>Client</b>	<b>Location</b>
5520 m <sup>2</sup>	Delta Pharma Factory	10 <sup>th</sup> of Ramadan City Egypt



## ▶ TM FACTORY

### ▶ SCOPE OF WORK

Complete design package & site supervision.

▶ <b>BUA</b>	<b>Client</b>	<b>Location</b>
60,000 m <sup>2</sup>	TM Group	Abo Rawash, Egypt



## ▶ MAMIBA COSMETICS FACTORY

### ▶ SCOPE OF WORK

Complete electromechanical design package for Ismailia factory and fire fighting evaluation for October factory.

▶ <b>BUA</b>	<b>Client</b>	<b>Location</b>
1890 m <sup>2</sup>	Mamiba Cosmetics	Egypt

Mamiba™



# INDUSTRIAL

## ▶ LA-FARAG CEMENT FACTORY

### ▶ SCOPE OF WORK

Complete fire fighting design for the new coal area.

- |                       |                 |                                   |
|-----------------------|-----------------|-----------------------------------|
| ▶ <b>BUA</b>          | <b>Client</b>   | <b>Location</b>                   |
| 52,000 m <sup>2</sup> | Lafarag Factory | Ain El Sokhna Road<br>Suez, Egypt |



## ▶ DELTA GRAND PHARMA FACTORY

### ▶ SCOPE OF WORK

Complete architectural and structural design package for their new extension in the production area.

- |                    |                    |   |
|--------------------|--------------------|---|
| ▶ <b>BUA</b>       | <b>Client</b>      | <b>Location</b>                           |
| 363 m <sup>2</sup> | Delta Grand Pharma | 10 <sup>th</sup> of Ramadan City<br>Egypt |





# RESIDENTIAL

## ▶ AL-ALAMEIN TOWERS (HIGH RISE)

### ▶ BRIEF

This project is one of the Mega projects in Egypt Vision 2030, this project consists of eight towers each 42 floors, complete with the infrastructure works around the towers area.

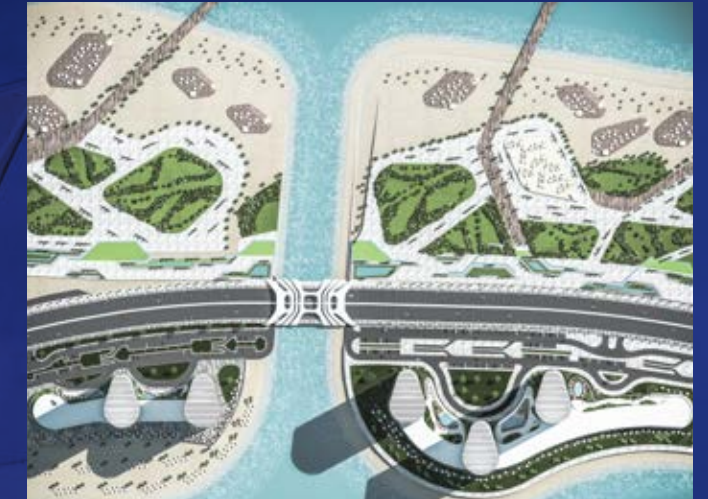
### ▶ SCOPE OF WORK

Design of the HVAC, electrical, and light current systems.

▶ **BUA**  
330,000 m<sup>2</sup>

**Client**  
New Urban  
Communities  
Authority

**Location**  
New Alamein City , Egypt



هيئة المجتمعات العمرانية الجديدة  
New Urban Communities Authority



# RESIDENTIAL

## ▶ UPTOWN CAIRO

### ▶ BRIEF

Emaar is one of the leading developer in Egypt, and this project is one of their large projects.

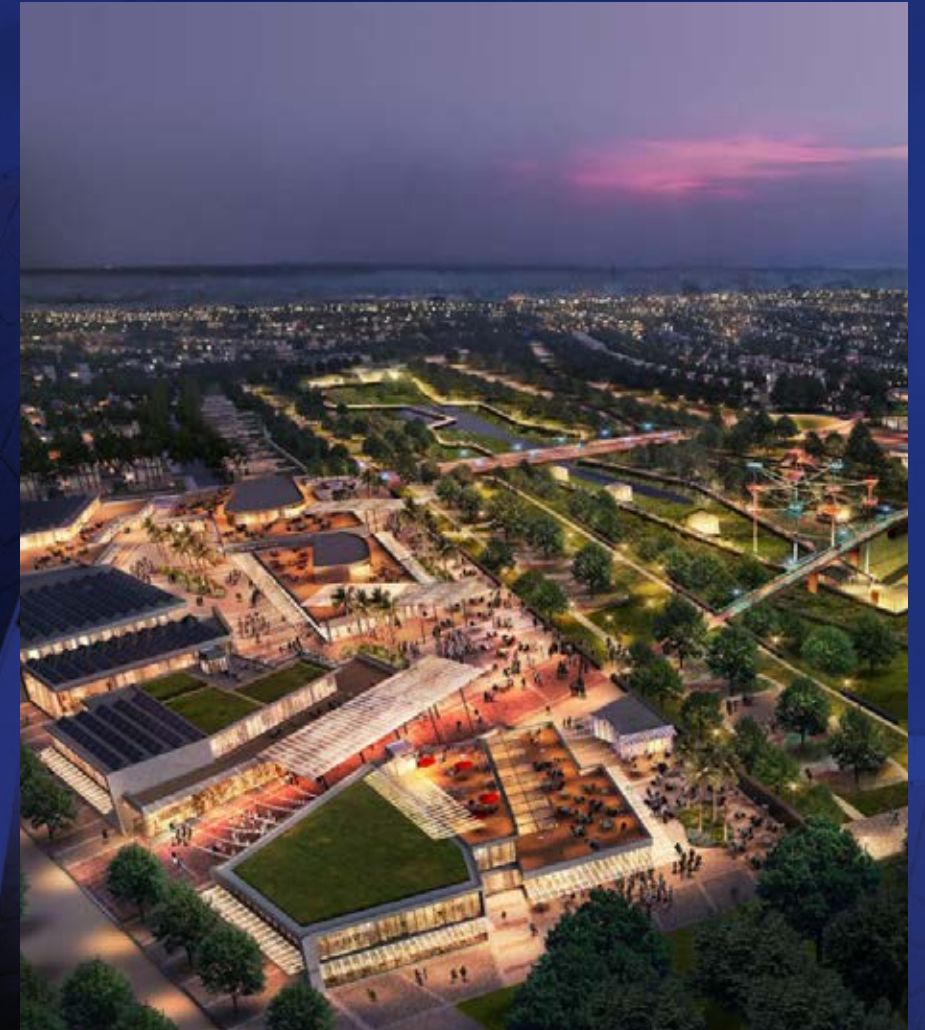
### ▶ SCOPE OF WORK

Complete electromechanical design review, and value engineering.

▶ **BUA**  
338, 345 m<sup>2</sup>

**Client**  
EMAAR

**Location**  
Cairo, Egypt



# RESIDENTIAL

## ▶ ALBA COMPOUND

### ▶ SCOPE OF WORK

Complete electromechanical design package.

▶ <b>BUA</b>	<b>Client</b>	<b>Location</b>
64,500 m <sup>2</sup>	ALBA Compound	Elshrouk, Egypt



## ▶ AL-AJLAN TOWERS (HIGH RISE)

### ▶ SCOPE OF WORK

Complete electromechanical design package.

▶ <b>BUA</b>	<b>Client</b>	<b>Location</b>
14,500 m <sup>2</sup>	Mr. Mohammed Bukhamseen	Dammam, Saudi Arabia



## ▶ NATIONAL HOUSING

### ▶ SCOPE OF WORK

Complete electromechanical design package for three compound (Borg AlArab, Sohag, & 6 of October).

▶ <b>BUA</b>	<b>Client</b>	<b>Location</b>
32,850 m <sup>2</sup>	General Union for Social Professions	Egypt



# ADMINISTRATION

## ▶ QUESNA HEADQUARTER

### ▶ BRIEF

PCE is the consultant for Quesna group in design and site supervision in some of their new projects, and this project is the headquarter for Quesna group in one of the good locations in Egypt with our concept design by Art deco style in architectural.

### ▶ SCOPE OF WORK

Complete architectural design package.

▶ BUA	Client	Location
38,500 m <sup>2</sup>	Quesna group	New Cairo, Egypt



# ADMINISTRATION

## ▶ L.G HEADQUARTER

### ▶ BRIEF

LG is one of the leading companies in the electronics, and they selected this administration building to be designed by PCE to find the full detailed and precised work in their new headquarter.

### ▶ SCOPE OF WORK

Complete architectural and electromechanical design package, and site supervision for architectural works.

▶ <b>BUA</b>	<b>Client</b>	<b>Location</b>
18,000 m <sup>2</sup>	LG	New Cairo, Egypt



# ADMINISTRATION

## ▶ MANSORA 1

### ▶ BRIEF

Mansoura one area in the middle of new administrative capital and considered one of the most important projects in the next ten years in Egypt, PCE plays an important role in the design and site supervision of this huge project.

### ▶ SCOPE OF WORK

Complete electromechanical design package and site supervision for Hall of life building, and electromechanical site supervision for the Club House building.

▶ BUA	Client	Location
10,600 m <sup>2</sup>	Administrative capital for urban development	New Capital, Egypt



# ADMINISTRATION

## ▶ PARAGON BUILDING (CS26)

### ▶ BRIEF

The new capital is the future of Egypt, and Builderia selected PCE to design their new project to get the up to date design with the accurate tender package.

### ▶ SCOPE OF WORK

Complete electromechanical design package.

▶ **BUA**  
16,918 m<sup>2</sup>

**Client**  
Builderia

**Location**  
New Capital, Egypt



# ADMINISTRATION

## ▶ HILLS ADMIN. BUILDING

### ▶ SCOPE OF WORK

Complete electromechanical design package.

▶ <b>BUA</b>	<b>Client</b>	<b>Location</b>
7000 m <sup>2</sup>	Al Ahly for real estate development	New Cairo , Egypt



AL AHLY FOR REAL ESTATE DEVELOPMENT

## ▶ MANSORA 3

### ▶ SCOPE OF WORK

Complete electromechanical site supervision for buildings 601 ,509 ,507, and 505.

▶ <b>BUA</b>	<b>Client</b>	<b>Location</b>
33,000 m <sup>2</sup>	Administrative capital for urban development	New Capital , Egypt



FOR URBAN DEVELOPMENT

العاصمة الإدارية للتنمية العمرانية



# ADMINISTRATION

## ▶ DABUR NEW HEADQUARTER

### ▶ SCOPE OF WORK

Complete design package and site supervision.

- |                                     |                                  |                                      |
|-------------------------------------|----------------------------------|--------------------------------------|
| ▶ <b>BUA</b><br>2600 m <sup>2</sup> | <b>Client</b><br>Dabur Egypt Ltd | <b>Location</b><br>New Cairo , Egypt |
|-------------------------------------|----------------------------------|--------------------------------------|



## ▶ PEARL BUILDING

### ▶ SCOPE OF WORK

Complete electromechanical design package.

- |                                       |                                     |   |
|---------------------------------------|-------------------------------------|---|
| ▶ <b>BUA</b><br>47,400 m <sup>2</sup> | <b>Client</b><br>Inmaa developments | <b>Location</b><br>Fifth District , Egypt |
|---------------------------------------|-------------------------------------|---|



## ▶ QUESNA FOUR ADMIN. BUILDINGS (AT QUESNA FACTORIES)

### ▶ SCOPE OF WORK

Complete design package.

- |                                       |                               |   |
|---------------------------------------|-------------------------------|---|
| ▶ <b>BUA</b><br>10,038 m <sup>2</sup> | <b>Client</b><br>Quesna group | <b>Location</b><br>Menia, Mnofia &<br>Sadat City, Egypt |
|---------------------------------------|-------------------------------|---|



## ▶ AZMEEL OFFICE BUILDING

### ▶ SCOPE OF WORK

Complete electromechanical design package .

- |                                       |                         |  |
|---------------------------------------|-------------------------|--|
| ▶ <b>BUA</b><br>37,500 m <sup>2</sup> | <b>Client</b><br>Azmeel | <b>Location</b><br>Jeddah , Saudi Arabia |
|---------------------------------------|-------------------------|--|



# ADMINISTRATION

## ▶ ADIB

### ▶ SCOPE OF WORK

Complete electromechanical design package (Many Branches).

- |                                    |                       |  |
|------------------------------------|-----------------------|--|
| ▶ <b>BUA</b><br>850 m <sup>2</sup> | <b>Client</b><br>ADIB | <b>Location</b><br>Zayied & Gardencity<br>Egyp |
|------------------------------------|-----------------------|--|



## ▶ ABHA ADMIN. BUILDING

### ▶ SCOPE OF WORK

Complete electromechanical design package.

- |                                       |                                  |  |
|---------------------------------------|----------------------------------|--|
| ▶ <b>BUA</b><br>24,450 m <sup>2</sup> | <b>Client</b><br>Shiekh Abo Hany | <b>Location</b><br>Abha , Saudi Arabia |
|---------------------------------------|----------------------------------|--|



## ▶ BARCLAYS BANK

### ▶ SCOPE OF WORK

Complete electromechanical design package.

- |                                    |                                |                                 |
|------------------------------------|--------------------------------|---------------------------------|
| ▶ <b>BUA</b><br>260 m <sup>2</sup> | <b>Client</b><br>Barclays Bank | <b>Location</b><br>Alex , Egypt |
|------------------------------------|--------------------------------|---------------------------------|



## ▶ LUSAIL TOWERS (HIGH RISE)

### ▶ SCOPE OF WORK

Complete electromechanical design package.

- |                                       |  |                                |
|---------------------------------------|--|--------------------------------|
| ▶ <b>BUA</b><br>40,000 m <sup>2</sup> | <b>Client</b><br>H.E Mr.Mohamed<br>Nasr Hassan | <b>Location</b><br>Doha, Qatar |
|---------------------------------------|--|--------------------------------|



# COMMERCIAL

## AL-ALAMEIN COMMERCIAL COMPLEX

### BRIEF

This project is one of the Mega commercial projects in Egypt Vision 2030, this project consists of two floor buildings as restaurants, cafes, and retail buildings, complete with the infrastructure works around the buildings area.

### SCOPE OF WORK

Design of the HVAC, electrical, and light current systems.

<b>BUA</b>	<b>Client</b>	<b>Location</b>
150,000 m <sup>2</sup>	New Urban communities Authority	New Alamein City , Egypt



هيئة المجتمعات العمرانية الجديدة  
New Urban Communities Authority



# COMMERCIAL

## ▶ THE GATE COMPLEX

### ▶ BRIEF

Mecon developments is one of the leading developers in Shikh Zayed, and selected PCE to carry out this Class A complex building including office spaces, hypermarket, and cafes.

### ▶ SCOPE OF WORK

Complete electromechanical design, and architectural modifications, and site supervision.

▶ **BUA**  
40,000 m<sup>2</sup>

**Client**  
Mecon Urban  
Developments

**Location**  
Shekh Zayed City  
Egypt



# COMMERCIAL

## ▶ LULU HYPERMARKET (DESTRIC & PARK MALL)

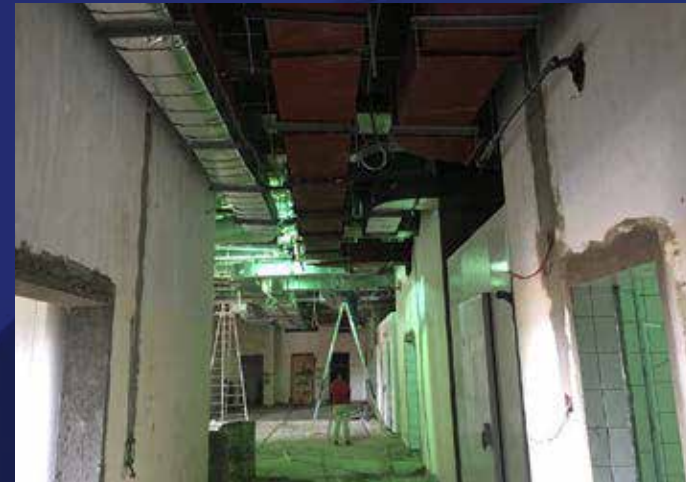
### ▶ BRIEF

LULU group is one of the most important investors in Egypt and they have a big investment plan in the Egyptian market, and LULU selected PCE to work with them in the complete consultation services for their projects.

### ▶ SCOPE OF WORK

Complete architectural and electromechanical design package, repair for structure works, and site supervision.

▶ <b>BUA</b>	<b>Client</b>	<b>Location</b>
17,200 m <sup>2</sup>	Lulu Group	Sheraton & New Cairo Egypt



# COMMERCIAL

## ▶ D12 MALL

### ▶ BRIEF

Mecon developments is one of the leading developers in Shikh Zayed, & selected PCE to carry out this mall building including shops, resturants, and cafes.

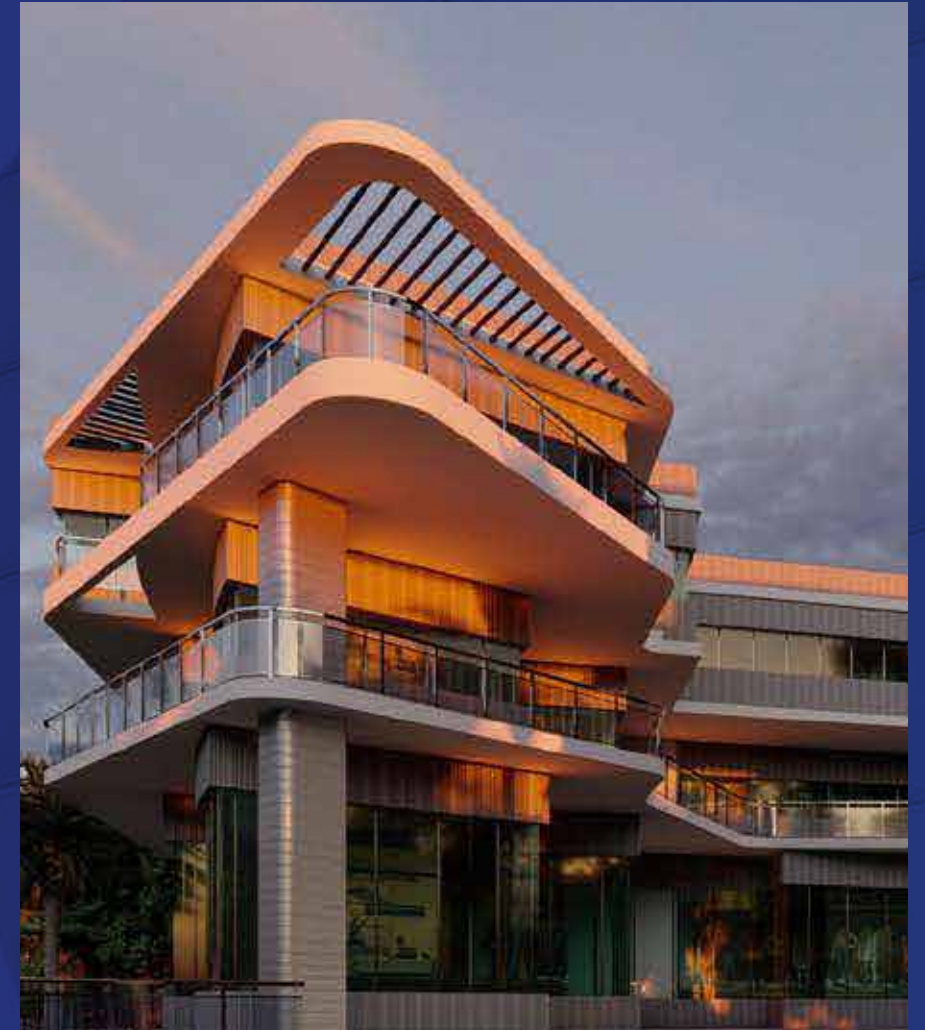
### ▶ SCOPE OF WORK

Complete design package.

▶ **BUA**  
5500 m<sup>2</sup>

**Client**  
Mecon Urban  
Developments

**Location**  
6th of October  
Egpyt



# COMMERCIAL

## ▶ SERVICE CENTER

### ▶ BRIEF

Mecon developments is one of the leading developers in Shikh Zayed, and selected PCE to carry out this mall building including shops, resturants, and cafes.

### ▶ SCOPE OF WORK

Complete design package.

▶ **BUA**  
3520 m<sup>2</sup>

**Client**  
Mecon Urban  
Developments

**Location**  
6th of October  
Egypt



# COMMERCIAL

## ▶ AL-ALAMEIN BEACH SIDE

### ▶ SCOPE OF WORK

Complete electromechanical & infra-structural design package.

- |  |  |   |
|--|--|---|
| ▶ <b>BUA</b><br>104,208 m <sup>2</sup> | <b>Client</b><br>New Urban<br>communities<br>Authority | <b>Location</b><br>New Alamein<br>City ,Egypt |
|--|--|---|



## ▶ GNENA MALL MOKATTAM

### ▶ SCOPE OF WORK

Architectural concept design.

- |                                       |                                     |                                       |
|---------------------------------------|-------------------------------------|---------------------------------------|
| ▶ <b>BUA</b><br>37,660 m <sup>2</sup> | <b>Client</b><br>Inmaa Developments | <b>Location</b><br>El-Mokattam, Egypt |
|---------------------------------------|-------------------------------------|---------------------------------------|



## ▶ BAYAT PLAZA (HIGH RISE)

### ▶ SCOPE OF WORK

Complete electromechanical & life safety design package.

- |  |                      |  |
|--|----------------------|--|
| ▶ <b>BUA</b><br>200,000 m <sup>2</sup> | <b>Client</b><br>DTC | <b>Location</b><br>Jeddah,<br>Saudi Arabia |
|--|----------------------|--|





# COMMERCIAL

## ▶ TRIVIUM COMPLEX

### ▶ SCOPE OF WORK

Complete electromechanical design package.

▶ <b>BUA</b>	<b>Client</b>	<b>Location</b>
71,200 m <sup>2</sup>	Inmaa Developments	New Cairo, Egypt



## ▶ TRIVIUM ZAYED

### ▶ SCOPE OF WORK

Complete electromechanical design package.

▶ <b>BUA</b>	<b>Client</b>	<b>Location</b>
45,710 m <sup>2</sup>	Inmaa Developments	Shekh Zayed City Egypt



# INFRA

## ▶ CCC & COC

## ▶ BRIEF

CCC & COC data centers exists in the middle of new administrative capital and considered one of the most important projects in the next ten years in Egypt, PCE plays an important role in the site supervision of this huge project.

## ▶ SCOPE OF WORK

Complete electromechanical site supervision.

## ▶ BUA

160,200 m<sup>2</sup>

## Client

Administrative capital for urban development

## Location

New Capital, Egypt



# INFRA

## ▶ BORG AL-ARAB AIRPORT

### ▶ BRIEF

PAS is a leader company in the petroleum air services and dedicated in the development in the new petroleum airports, PCE plays an important role in the site supervision of their new airport.

### ▶ SCOPE OF WORK

Complete electromechanical and infrastructure redesign and site supervision.

▶ **BUA**  
4500 m<sup>2</sup>

**Client**  
PAS

**Location**  
Borg Al-Arab, Egypt



# INFRA

## ▶ GACA AIRPORT

### ▶ SCOPE OF WORK

Complete electromechanical and Infrastructure design package.

BUA	Client	Location
350,000 m <sup>2</sup>	General Authority for Civil Aviation GACA	Jeddah, Saudi Arabia



## ▶ NEW CAPITAL TUNNEL

### ▶ SCOPE OF WORK

CFD analysis, shopdrawing, and technical office support.

BUA	Client	Location
124,350 m <sup>2</sup>	Administrative capital for urban development	New Capital, Egypt



## ▶ MASTER AL-SOKHNA

### ▶ SCOPE OF WORK

Complete electromechanical design package and site supervision.

BUA	Client	Location
7300 m <sup>2</sup>	Armed Forces	Cairo Sokhna Road, Egypt



# HEALTH CARE

## ► CREATION CENTER 57357

### ► BRIEF

It was an honor to PCE to contribute in part of this huge project in the design services.

### ► SCOPE OF WORK

Complete electromechanical design package.

► <b>BUA</b> 2600 m <sup>2</sup>	<b>Client</b> 57357 hospital	<b>Location</b> Cairo, Egypt
-------------------------------------	---------------------------------	---------------------------------



57357 مؤسسة مستشفى  
سرطان الأطفال  
Children's Cancer Hospital Foundation

# HEALTH CARE

## ▶ QENA HOSPITAL

### ▶ BRIEF

One of the new hospitals in the upper Egypt, and the project consists of 200 bed emergency hospital.

### ▶ SCOPE OF WORK

Complete electromechanical design package and shop drawing.

### ▶ BUA

11,200 m<sup>2</sup>

### Client

Ganoub El Wadi  
University

### Location

Qena, Egypt



# HEALTH CARE

## ▶ NAJAF HOSPITAL

### ▶ SCOPE OF WORK

Complete shop drawing for electromechanical and infrastructure networks (300 bed hospital).

▶ <b>BUA</b> 130,000 m <sup>2</sup>	<b>Client</b> Ministry of Health	<b>Location</b> Najaf, Iraq
--	-------------------------------------	--------------------------------



## ▶ EL-SAFA CLINICS

### ▶ SCOPE OF WORK

Complete electromechanical design package.

▶ <b>BUA</b> 10,000 m <sup>2</sup>	<b>Client</b> EL - Safa	<b>Location</b> Marina 7, Egypt
---------------------------------------	----------------------------	------------------------------------



## ▶ CAIRO KINDER HOSPITAL

### ▶ SCOPE OF WORK

Complete electromechanical design package.

▶ <b>BUA</b> 970 m <sup>2</sup>	<b>Client</b> Cairo kinder	<b>Location</b> El-Manial, Egypt
------------------------------------	-------------------------------	-------------------------------------



# HEALTH CARE

## ▶ POLICE HOSPITAL

### ▶ SCOPE OF WORK

Complete electromechanical design package (300 bed hospital).

- ▶ **BUA** 143,490 m<sup>2</sup>
- ▶ **Client** Police Academy
- ▶ **Location** Al Abasia, Egypt



## ▶ HAIL HOSPITAL

### ▶ SCOPE OF WORK

Complete electromechanical design package (200 bed hospital).

- ▶ **BUA** 22,775 m<sup>2</sup>
- ▶ **Client** Hail hospital
- ▶ **Location** Hail, Saudi Arabia



## ▶ EL-SAFA HOSPITAL

### ▶ SCOPE OF WORK

Complete renovation of the electromechanical design package.

- ▶ **BUA** 2380 m<sup>2</sup>
- ▶ **Client** EL - Safa
- ▶ **Location** Mohandseen , Egypt



## ▶ MILITARY HOSPITAL

### ▶ SCOPE OF WORK

Complete design package (200 bed hospital).

- ▶ **BUA** 95,000 m<sup>2</sup>
- ▶ **Client** Military hospital
- ▶ **Location** Saudi Arabia





# HEALTH CARE

## ▶ SOUAD KAFABI HOSPITAL

### ▶ SCOPE OF WORK

Complete electromechanical design package and site supervision.

▶ BUA	Client	Location
30,000 m <sup>2</sup>	Must University	6th of October, Egypt



# TOURISTIC

## ▶ PALMA LAGOONS RESORT

### ▶ BRIEF

Kayan developments selected PCE to create the architectural concept design for their new project in Noarth Coast.

### ▶ SCOPE OF WORK

Complete design package.

▶ **BUA**  
20,000 m<sup>2</sup>

**Client**  
Kayan for project  
management

**Location**  
North Coast , Egypt



# TOURISTIC

## ▶ CLEOPATRA RESORT

### ▶ SCOPE OF WORK

Complete design package.

▶ BUA	Client	Location
321,000 m <sup>2</sup>	Cleopatra hotel	Sharm El-Shiekh, Egypt



## ▶ LA HACIENDA RESORT

### ▶ SCOPE OF WORK

Complete electromechanical and infrastructure design package and site supervision.

▶ BUA	Client	Location
800 m <sup>2</sup>	Bahrawi investment Co	Ras Sidr, Egypt



# TOURISTIC

## ▶ GNENA HOTEL

### ▶ SCOPE OF WORK

Complete electromechanical design package and shop drawing.

▶ **BUA** 39,000 m<sup>2</sup>      **Client** Inmaa Developments      **Location** Nasr City, Egypt



## ▶ SHARMING INN RESORT

### ▶ SCOPE OF WORK

Complete electromechanical & infrastructure design package.

▶ **BUA** 550 m<sup>2</sup>      **Client** Sharming Inn Group      **Location** Sharm el-Sheikh, Egypt



## ▶ BOULEVARD HOTEL

### ▶ SCOPE OF WORK

Complete design package.

▶ **BUA** 41,100 m<sup>2</sup>      **Client** Boulevard Group      **Location** Saudi Arabia



# RETAIL

## ▶ AZADEA

## ▶ BRIEF

Azadia group is one of the most important investors in the retails market in Egypt and they selected PCE to carry out the design services and site supervision for all their retails shops in Almaza City Center (Zara, Zara home, Paul, Sunglass hut, Pull&Bear, Bershika, Massimo Dotti, Punt Roma, Oyosho & stradivarius).

## ▶ SCOPE OF WORK

Complete electromechanical design package.

▶ **BUA**  
6845 m<sup>2</sup>

**Client**  
Azadea

**Location**  
Cairo, Egypt



# RETAIL

## ▶ AMER GROUP

## ▶ BRIEF

PCE is the consultant for Amer group retails Egypt since 2015 for the design and site supervision in some of their new branches such as: Chili's, Studio Misr, Ocean Basket, and Mama .

## ▶ SCOPE OF WORK

Complete electromechanical design package.

▶ <b>BUA</b> 5400 m <sup>2</sup>	<b>Client</b> Amer Group	<b>Location</b> Egypt
-------------------------------------	-----------------------------	--------------------------



# RETAIL

## ▶ ORIGINAL MARINES

### ▶ SCOPE OF WORK

Complete electromechanical design package and site supervision.

▶ <b>BUA</b>	<b>Client</b>	<b>Location</b>
100m <sup>2</sup>	Original Marines	Cairo Festival City, Egypt



## ▶ TBS KITCHEN & TBS WAY

### ▶ SCOPE OF WORK

Complete electromechanical design package.

▶ <b>BUA</b>	<b>Client</b>	<b>Location</b>
800 m <sup>2</sup>	TBS	Cairo, Egyp



# RETAIL

## ▶ HOUSE OF COCOA (MALL OF EGYPT)

### ▶ SCOPE OF WORK

Complete electromechanical design package and site supervision.

- ▶ **BUA** 100 m<sup>2</sup>
- Client** House of cocoa
- Location** Mall of Arabia, Egypt



## ▶ ARABIATA

### ▶ SCOPE OF WORK

Complete electromechanical design package.

- ▶ **BUA** 300 m<sup>2</sup>
- Client** Arabiata
- Location** Alexandria & Madinaty, Egypt



## ▶ ETISAL MOBILE SHOP

### ▶ SCOPE OF WORK

Complete design package.

- ▶ **BUA** 80m<sup>2</sup>
- Client** Honor
- Location** Heliopolis, Egypt



## ▶ BAKIER STATIONERY

### ▶ SCOPE OF WORK

Complete electromechanical design package and site supervision.

- ▶ **BUA** 220 m<sup>2</sup>
- Client** Bakier Stationery
- Location** Mall of Arabia, Egypt





# EDUCATION

## ▶ K K U

## ▶ BRIEF

KKU is one of the largest universities in KSA, PCE carry out the complete design package for the two new campus in Bisha& Abha.

## ▶ SCOPE OF WORK

Complete design package.

## ▶ BUA

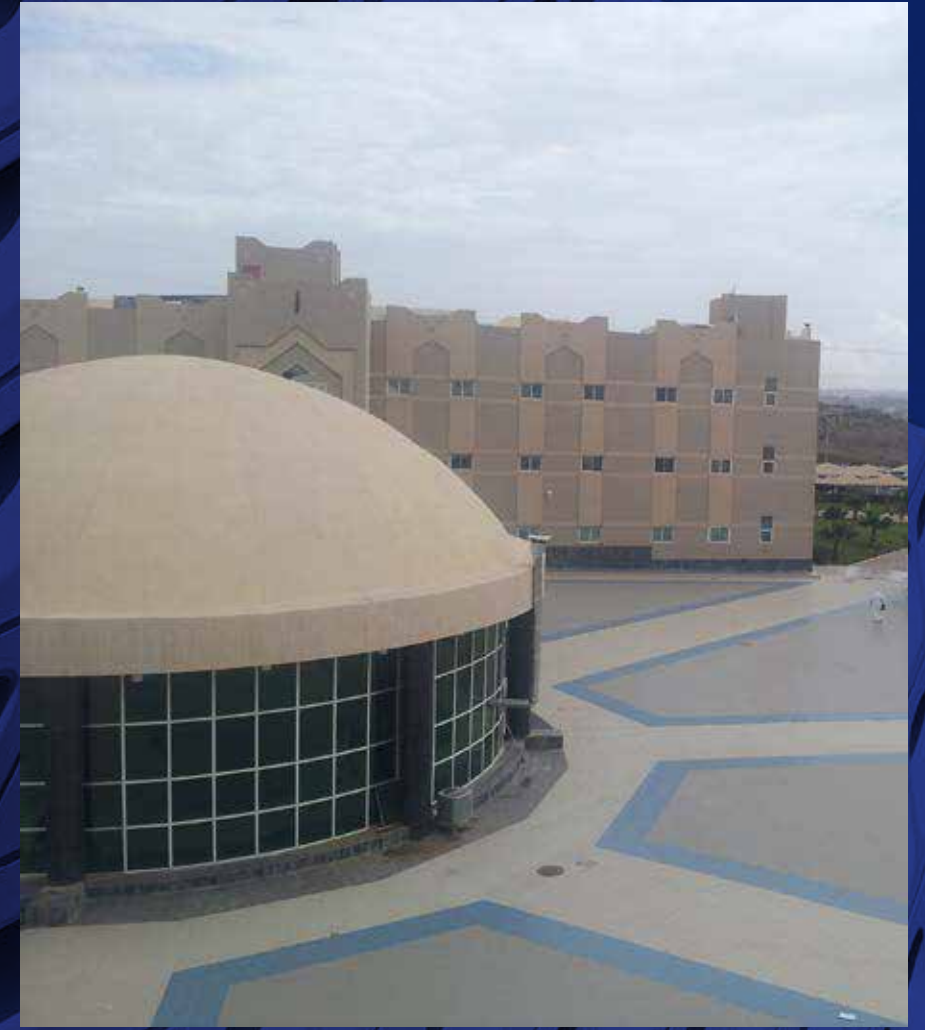
400,000 m<sup>2</sup>

## Client

King Khaled University

## Location

Bisha & Abha  
Saudi Arabia



# EDUCATION

## ▶ KING SOUD UNIVERSITY ENDOWMENT

### ▶ SCOPE OF WORK

Complete electromechanical redesign package.

▶ **BUA** 75,000 m<sup>2</sup>      **Client** H.E King Saud      **Location** Riyadh, Saudi Arabia



## ▶ MUST UNIVERSITY

### ▶ SCOPE OF WORK

Design of plumbing system .

▶ **BUA** 300,000 m<sup>2</sup>      **Client** Must University      **Location** 6th of october, Egypt



## ▶ TIBA UNIVERSITY

### ▶ SCOPE OF WORK

Infrastructure & electromechanical design review and shop drawing.

▶ **BUA** 9950 m<sup>2</sup>      **Client** Binladin RPD      **Location** Saudi Arabia



مجموعة بن لادن السعودية  
SAUDI BINLADIN GROUP



# ENTERTAINMENT

## ▶ EMPC

## ▶ BRIEF

EMPC is the leading media city in Egypt, and selected PCE to review the status of the fire fighting and fire alarm systems of the city.

## ▶ SCOPE OF WORK

Design of infrastructure for the fire fighting, and fire alarm and site supervision.

▶ **BUA**  
42,750 m<sup>2</sup>

**Client**  
EMPC

**Location**  
6th of October, Egypt



# ENTERTAINMENT

## ▶ CINEMAS MALL OF TANTA

### ▶ SCOPE OF WORK

Design review and shop drawing for electrical & low current systems.

▶ <b>BUA</b> 2960 m <sup>2</sup>	<b>Client</b> Marakez	<b>Location</b> Tanta, Egypt
-------------------------------------	--------------------------	---------------------------------



## ▶ ABDEL-WAHAB THEATER

### ▶ SCOPE OF WORK

Design of fire fighting system & fire alarm system design packages & site supervision.

▶ <b>BUA</b> 3820 m <sup>2</sup>	<b>Client</b> Ministry of Culture	<b>Location</b> Alexandria, Egypt
-------------------------------------	--------------------------------------	--------------------------------------



# SPORTS

## ▶ TENNIS & SQUASH COURT (OLYMPIC CITY)

### ▶ BRIEF

Olympic city exists in the new administrative capital and considered one of the most important projects in the next ten years in Egypt, PCE plays an important role in the design and site supervision of this two courts in the city.

### ▶ SCOPE OF WORK

Complete electromechanical design package.

▶ **BUA**  
45,350 m<sup>2</sup>

**Client**  
Concord

**Location**  
New Capital, Egypt



CONCORD



# SPORTS

## ▶ MISR INSURANCE CLUB

### ▶ SCOPE OF WORK

Design of plumbing system & infrastructure .

▶ **BUA** 41,300 m<sup>2</sup>      **Client** Misr Insurance Club      **Location** Al-Mokattam, Egypt



## ▶ TENNIS COURT (SPORTS CITY)

### ▶ SCOPE OF WORK

Complete electromechanical design package.

▶ **BUA** 3000 m<sup>2</sup>      **Client** Concord      **Location** New Capital, Egypt



# OUR CLIENTS

